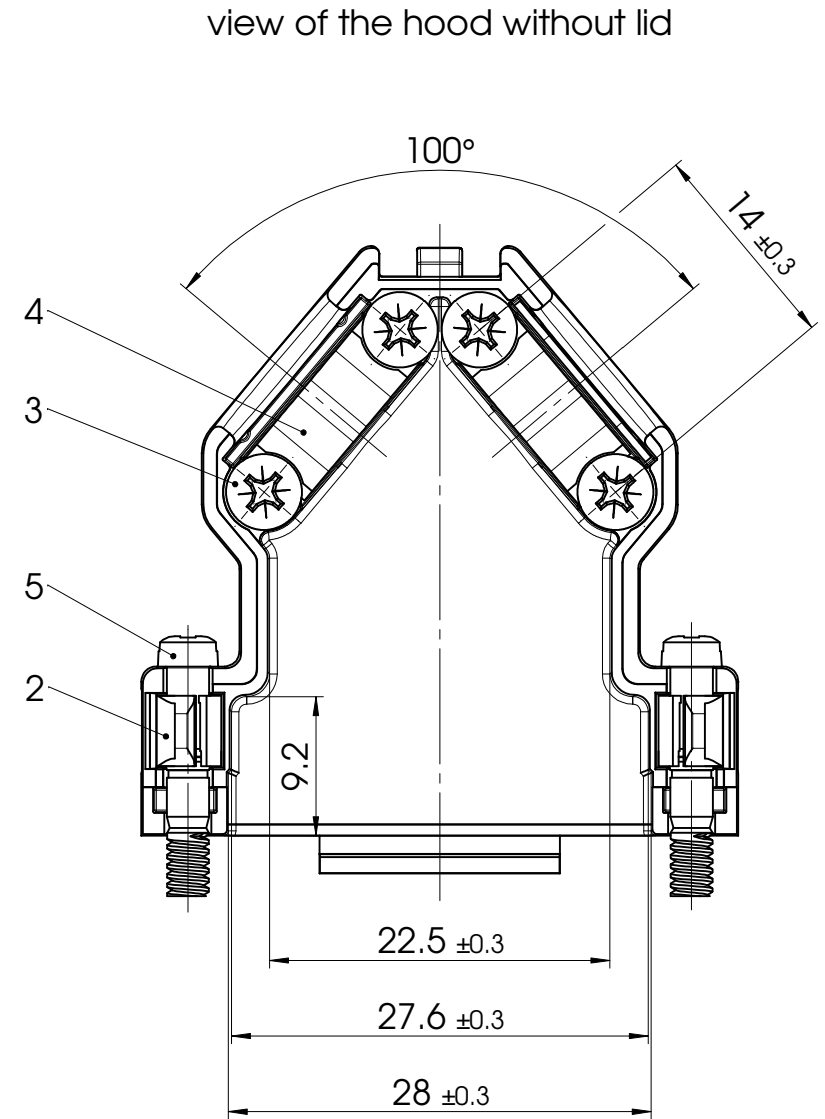
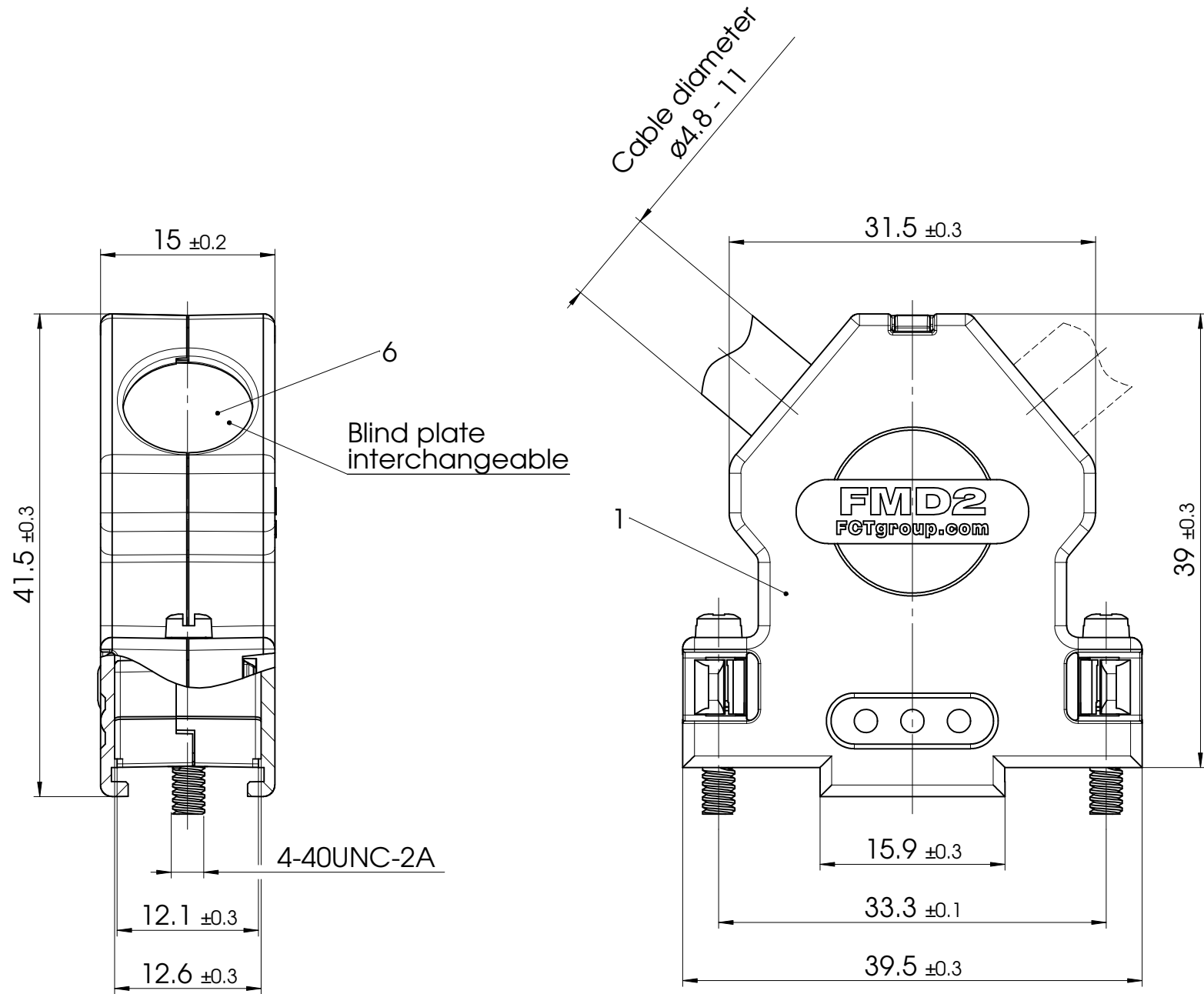


1 2 3 4 5 6 7 8

A
B
C
D
E
F

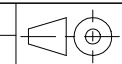


Preliminary drawing
Development status: 13-10-2009

Metal hood with two cable outlets.
Alternative on one side closed
cable outlet, with Blind plate.

max. torque are 40 Ncm

No.	St.	Part	Type Description/Material	Surface plating/Colour/Class
6	1	Blind plate	Stainless steel	blank
5	2	Locking screw	FVS1/5-4144 4-40 / Steel	nickel plated
4	2	Cable clamp	Steel	tin plated
3	4	Screw	Case hardened steel	zinc plated
2	2	Catch spring	Polyester	black
1	1	Hood	FMD2 / Zinc die-cast	nickel plated



Measurement without tolerance occ. to ISO 2768-m

SCALE 2:1

TITLE

DRAWN

NAME / DATE
Anke Meyer-Richter
06-03-2009

CHECKED

FCT group
fctgroup.com

DWG.NO.

Metal hood

FMD2

REV.

1

PAGES 2

COMMENT: ALL RIGHTS ARE RESERVED BY US FOR THIS DRAWING. WITHOUT OUR PRIOR CONSENT, IT MAY NEITHER BE DUBICATED NOR MADE AVAILABLE TO A THIRD PARTY. AND IT ALSO MAY NOT BE IMPROPERLY USED BY THE RECEIVER, OR A THIRD PARTY.

1 2 3 4 5 6 7 8